





# Consolidated Tobacco Processors

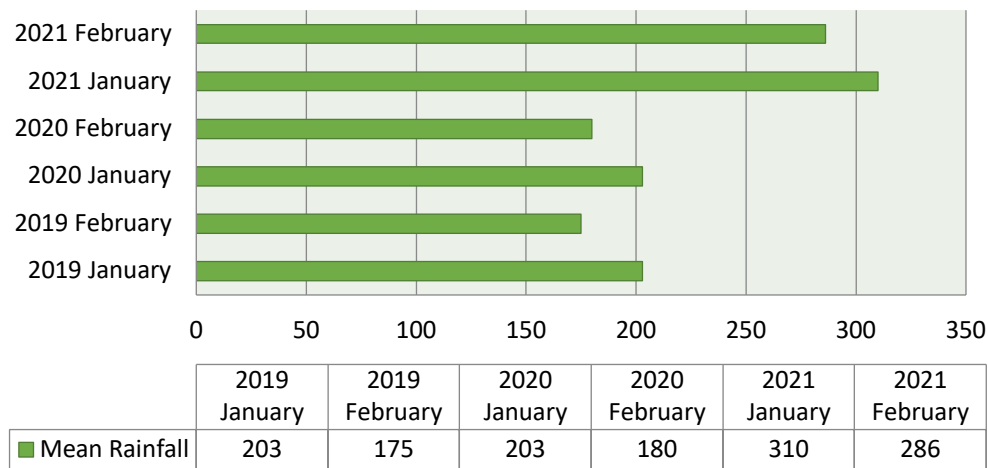
## Zimbabwe FCV 2020/21 Crop Report # 4 - February 2021

### 1.0 Climate Outlook

Contrary to the previous report there has been more rainfall falling in the past 3 weeks. With this, it must be noted that although the rainfall pattern has been generally widespread the areas that have been mostly affected is the Eastern and Southern provinces.

The notable national rainfall amounts recorded compared to previous growing seasons are as shown below.

**3 Year Mean Monthly Rainfall Across Tobacco growing Areas**



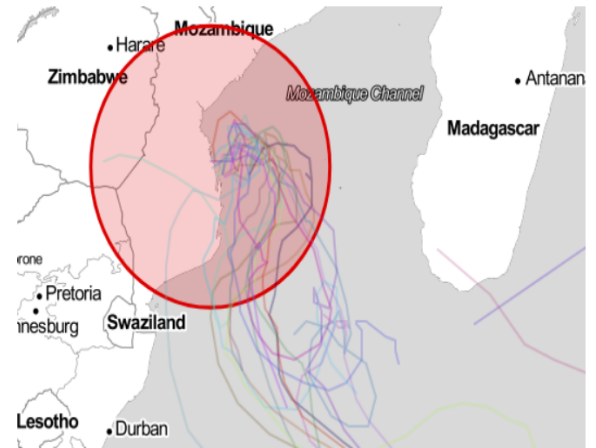
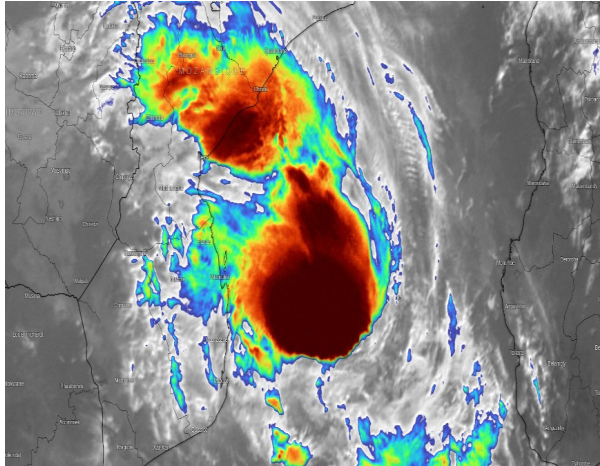
The Northern districts have been somewhat relieved of heavy rains which is allowing conducive conditions for weeding, applying fertilizers and harvesting of tobacco crops.

As the current weather pattern persists the Department of Meteorological Services has predicted more rains in Matabeleland (non-tobacco), Masvingo (non-tobacco) and Manicaland, the latter being a tobacco growing region; growers are being vigilant and taking heed of the situation.

Rainfall in excess of 100mm within 24 hours is expected in the regions mentioned while moderate rains below 50mm are expected in the rest of the country.

### 1.1 Tropical Cyclone "Guambe"

While the spell of heavy rains and flooding in the Eastern and Southern districts brought about by tropical Cyclone "Eloise" are still being experienced, there is a fresh threat of another tropical cyclone "Guambe", albeit smaller, hitting the Eastern parts of Zimbabwe particularly Manicaland as shown below.



Cyclone "Guambe" Satellite Forecast

## 2.0 Agronomic Outlook

The cloudy wet spells interspersed with some sunlight, especially in the North have promoted more open grained leaf qualities; hence we expect an improvement in crop quality in the 2021 marketing season.

There has been conspicuously less prevalence of field related "J" and "K" styles in the "on the farm" crop throw as crops have been subjected to in-field cool weather conditions during harvesting.

Reaping and curing are the main operations among all growers as the rains have promoted growth and ripening of both dry land and irrigated crops.

### 2.1 Irrigated Crops

All Irrigated crops, commercial and small scale are being harvested and cured. Ripening of crops has generally been enhanced by the perpetual rains; hence growers are struggling from intense pressure for barn space due to speedy crop ripening.



Irrigated crops post harvesting



Overall growing conditions have been considerably favourable for irrigated crops hence we expect an improved crop quality and volume of this portion of the crop.

## 2.2 Dry land Crops.

Early planted dry-land crops are currently between the second and third reaping phase while most late planted dry land crops are at the 1<sup>st</sup> reaping stage. In light of the firm establishment of all dry land crops due to the reliable rains, we expect soft natured standard tobacco qualities.

However, the unfortunate incidence of Cyclone “Eloise” destroyed a few late planted dry land crops in Manicaland province.

## 3.0 National Crop size



Dry land in field

1st Reapings

## 3.1 Grower Registration.

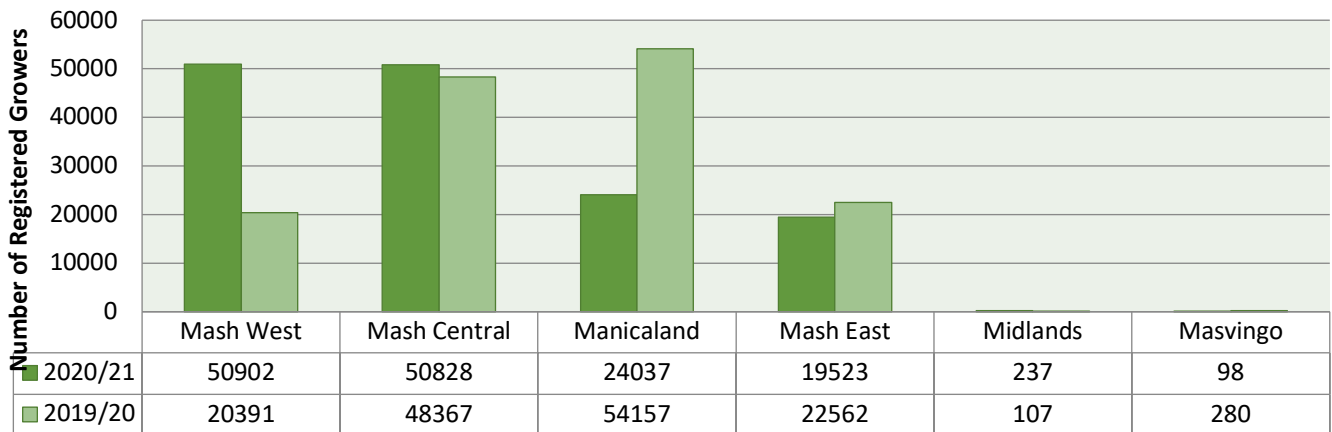
As of 12 February 2021, some 145,625 growers had registered to sell their crop in the 2021 marketing season compared to 145,864 in the previous season. This denotes an insignificant -1% decline, which was/is part of the initial crop estimate pointing towards between 200 – 210 million kg.

On a national scale, 1, 916 new growers have been registered as at 12 February 2021 compared to 7,482 in the preceding season. This indicates a decrease of -74% in the number of newly registered growers mainly due to the prevailing unfavorable macroeconomic environment and successive droughts experienced in the previous consecutive seasons.

Seed sales increased by 27% vs. 2019/2020 season whilst the area planted increased by +/-15%, mostly irrigated crops. Therefore, considering the above with increased rainfall the crop volume at this critical stage of production leads the national crop volume estimations adjusted slightly downwards to between 190 - 200 million kgs.



**2020/21 Season Grower Registration By Province**



#### 4.0 CTP Agronomic Outlook.

CTP contract growers in all regions are well on course with reaping, curing and grading. Grading is underway for lower stalk reaping's as the onset of the marketing season is approaching. In general, a good standard of leaf quality and volume has been seen throughout all CTP growers to date.

#### 5.0 Opening of the 2020 Marketing season.

The marketing season is expected to kick off next month (March) if regulators are convinced that World Health Organization protocols on controlling COVID-19 are adhered to, this is according to Tobacco Industry Marketing Board (TIMB).

The Reserve Bank of Zimbabwe (RBZ) is expected to present this year's monetary policy statement during which payment modalities for tobacco producers are expected to be announced.

#### 6.0 Covid 19 Outlook.

Government has enforced a further 2 weeks lock down extension despite a massive drop in new Covid 19 infections and deaths. This is encouraging as indications are pointing towards a successful containment of the virus as we approach the busy tobacco marketing season.

Agricultural operations have been exempted from the current lockdown; hence growers are well on course with preparations for the marketing season.

#### 7.0 Summary

Rains have been prevalent in all tobacco growing areas hence speeding up growth and ripening of all tobacco crops.

Reaping and curing are the main operations among all growers and a substantial improvement in crop quality has been observed among all growers.



Considering the tangible influences regarding crop growth the revised crop estimate at this stage is reduced slightly downwards vs previous report to between 190 - 200 million kgs. This is mainly due to the past 3 weeks of higher than expected rainfall and now the recent forecast with cyclone Guambe persisting in the the eastern parts of the country.

If Covid 19 regulations and protocols have been satisfied by all stakeholders involved, we expect the marketing season to kick off towards the end of March.

**DISCLAIMER:** The information provided in this document is merely intended for the use as an indicative opinion on the growing and market conditions of the 2020 / 21 tobacco growing season and statistics relating to the 2020 / 21 Zimbabwean tobacco growing season. All descriptions and advice relating to the growing season are subjective and should not be used other than for an insight from a Consolidated Tobacco Processors perspective. Consolidated Tobacco Processors and its employees accept no legal liability relating to the opinions and representations expressed in this document.